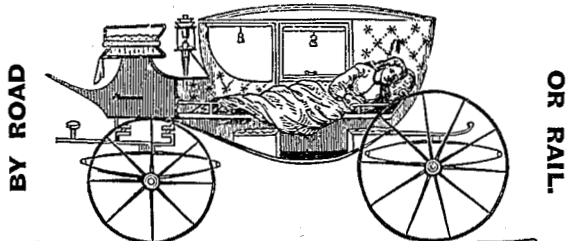


**READING'S
IMPROVED INVALIDS' COT CARRIAGES**

FOR THE REMOVAL OF INVALIDS.

With Removable Couch and Seats for Two or Four Persons



These Carriages are so constructed as to render Travelling easy and agreeable to the most confirmed Invalid, being fitted with noiseless wheels and every appliance for ease and comfort, and let on moderate terms for any journey.

H. & J. READING, Coachbuilders,
5, Riding House St., Langham Place, London, W.

DOWIE & MARSHALL,
455, West Strand, Trafalgar Sq., W.C.



SHOES FOR NURSES,

Suitable either for Indoor or Outdoor wear.

Very soft easy upper leather, stout soles for warmth while standing on stone corridors, india-rubber heels for silence, natural flannel lined for warmth. No. 24 in Catalogue, 8/9.

These Shoes are kept in stock in various sizes and widths; they cannot be made to order for this price. Every other description of Boots and Shoes is made, and all will be found delightfully easy.

WRIGHT'S

Protects from Fever, Scarlatina,
Measles and Small Pox.

FOR PURIFYING THE SKIN

AFTER INFECTIOUS DISEASES.

PURCHASE WRIGHT'S SOAP ONLY.

Proprietors and Manufacturers,

WRIGHT, LAYMAN & UMNEY, late W. V. Wright & Co., SOUTHWARK, LONDON, S.E.

Recommended by the entire Medical Faculty.

Invaluable for the Nursery.

COAL

Unrivalled as a Toilet Soap.

A luxury for the Bath.

Unequaled for the Complexion.

TAR

Tablets 6d. & 1/- each.

Boxes, 1/6 & 3/- each

SOAP.

SOFT DELICATE SKIN.

For Invalids who suffer from dry, hot skin, and
Nurses who are troubled with hard, rough hands.



ROWLANDS' KALYDOR

is invaluable, being the most soothing, healing, refreshing, and curative preparation for the skin ever produced; it cools and refreshes the face and hands in hot, dry atmospheres, soothes and heals all Irritation, Redness, Roughness of the

Skin, and produces soft, delicate, smooth skin, and a beautiful and fair complexion; it is absolutely harmless to the most delicate skin, and for more than 60 years has been known to be one of the few preparations for the skin which can be relied upon.

Bottles 2s. 3d. and 4s. 6d. Ask anywhere for

ROWLANDS' KALYDOR,
OF 20, HATTON GARDEN, LONDON,
AND AVOID WORTHLESS IMITATIONS.

GARROULD,

Edgware Rd., Hyde Park, W.

Estimates given for all kinds
of

**HOSPITAL
UNIFORMS, &c.**

Blankets, Flannels, Sheet-
ings, and all Hospital
Requisites at Lowest List
Prices.

PATTERNS POST FREE.

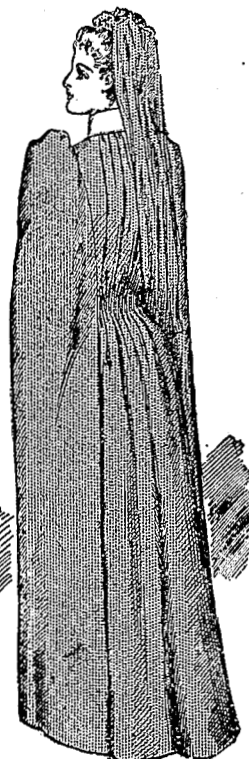
GARROULD'S celebrated
CLOAKS. Made of all
WOOL ARMY CLOTH,
thoroughly shrunk, and
wear guaranteed, 25/6.

E. and R. GARROULD,

150, 152, 154, 156, 158, 160,
Edgware Rd., Hyde Pk., W.

Telegraphic Address:

"GARROULD, LONDON."



[previous page](#)

[next page](#)